



Bal Bharati PUBLIC SCHOOL



Bal Bharati Public School, Phase III
Dugri, Ludhiana Tel: 0161-2520870

CBSE
affiliation

Winner of International School Award

Bal Bharati Public School, Phase II
Dugri, Ludhiana Tel: 0161-2521170

An Institution of Child Education Society (Redg.) New Delhi.

PROSPECTUS

Session 2023-24





“हंसो नयतु नः प्रज्ञाम्”

“Give us the wisdom & the ability to comprehend”

BAL BHARATI PUBLIC SCHOOL, LUDHIANA
{An Institution of Child Education Society(Regd.)} New Delhi

Bal Bharati Public Schools are comprehensive, co – educational English medium schools. Hindi enjoys its place of pride as the National Language in its curriculum.

Child Education Society, the apex body of Bal Bharati Public Schools and other institutions of higher education, was set up in the year 1944 during the Pre- independence when the elders thought that the Indian Culture, Heritage, Tradition and Ethos must be preserved and conserved and in order to achieve those objectives, it became obligatory for the Society to educate young people. Thus, the society was registered under the Societies Act, 1860.

Today, the affairs of the Society are managed by the board of management consisting of eminent educationists and social workers. In the recent years, the pace of expansion and development of new schools has greatly quickened, going up from just one school and one institution (NTTI) in 1984 to as many as 1 Play School, 1 Training Institution, 12 Core Schools, 1 Management Agreement School and 12 Project Schools in collaboration with the Indian Railways and National Thermal Power Corporation (NTPC). Presently, Mr. L. R. Channa is the President of the Society.

Each school is managed by a separate Managing Committee in accordance to the rules as prescribed by concerned State but is ultimately responsible to the apex body.

The Schools built by the society are set in congenial surroundings. They are housed in modern attractive buildings equipped with all requisite facilities, well stocked libraries, laboratories, computers, audio – visual equipment, facilities for creative arts, indoor and outdoor games and swimming pools (wherever possible).

Bal Bharati's educational philosophy is inspired by the maxim “ आनोभ्रदः कृतवो यन्तु विश्वतः.”, ‘Let noble thoughts come to us from all sides.’ It provides comprehensive education keeping in view the country's rich heritage and cultural background and opens opportunities for the development of different facets of the child's personality.

Besides academic excellence and intellectual development, the School endeavours to help each child discover and develop one's innate talents and abilities. It seeks to instil in the children proper habits, positive attitude and values such as truthfulness, unselfishness, self respect, self control, sense of duty, good manners, fair play, team spirit, dignity of labour, punctuality, compassion, freedom of mind and a rational and scientific approach.

Conscious effort is made to foster pride and love for the country and its great heritage and tradition of tolerance epitomized in the noble phrase “वसुधैव कुटुम्बकम्” ‘The whole world is one family.’

PLAY SCHOOL

1. Sunshine World, Ludhiana

CORE SCHOOLS (EXISTING)

1. Bal Bharati Public School, Neelbad, Bhopal (MP).
2. Bal Bharati Public School, Brij Vihar, Ghaziabad (UP).
3. Bal Bharati Public School, Dwarka, Delhi.
4. Bal Bharati Public School, Ganga Ram Hosp. Marg, New Delhi.
5. Bal Bharati Public School, Ludhiana- I (PB).
6. Bal Bharati Public School, Ludhiana – II (PB).
7. Bal Bharati Public School, Manesar (HR).
8. Bal Bharati Public School, Navi Mumbai.
9. Bal Bharati Public School, Noida (UP).
10. Bal Bharati Public School, Pitampura, Delhi.
11. Bal Bharati Public School, Rohini, Delhi.
12. Bal Bharati Public School, Solan (HP).

PROJECT SCHOOLS

1. Bal Bharati Public School, Bhopal.
2. Bal Bharati Public School, Jhanor.
3. Bal Bharati Public School, Ratnagiri.
4. Bal Bharati Public School, Simhadri.
5. Bal Bharati Public School, Sipat.
6. Bal Bharati Public School, Annupur, MP.
7. Bal Bharati Public School, Jharli, Haryana.
8. Bal Bharati Public School, Khargone, MP.
9. Bal Bharati Public School, Gadarwara, MP.
10. Bal Bharati Public School, Kudgi, Karnataka.
11. Bal Bharati Public School, Aurangabad, Bihar.
12. Bal Bharati Public School, Sundargarh, Odisha.

MANAGEMENT AGREEMENT SCHOOL

1. Bal Bharati Public School, Ghaziabad .



Bal Bharati
PUBLIC SCHOOL

“हंसो नयतु नः प्रज्ञाम्”

Give us the wisdom & the ability to comprehend

“Let noble thoughts come to us from all sides”- The school motto “Hanso Nayatu Naha Pragyam” is depicted in the image of a child astride a soaring swan.

School Management

The School Management Committee is headed by:

Mr. Nikhil Channa (Chairman)

Mr. L.V. Sehgal (Secretary /Manager)

BAL BHARATI PUBLIC SCHOOL, LUDHIANA

Principal	:	Mr. Ashish Sawhney
Telephone No.	:	0161-2521170
E- mail	:	bbpsludhiana@gmail.com
Website	:	www.bbpsldhu1.balbharati.org/
School Timings	:	Pre- Nursery, Mont-I, Mont-II 8:30 a.m. – 12:30 a.m. (Summer) 9:15 a.m. – 1: 15 a.m. (Winter)
		Class I to V 7: 25 a.m. – 1:45 p.m. (Summer) 8: 25 a.m. – 2: 30 p.m. (Winter) 10:30 a.m. – 11:30 a.m. (with appointment)
Visiting Hours	:	



Bal Bharati
PUBLIC SCHOOL
LUDHIANA

Our Vision

We are dedicated to equip our students with the knowledge and life skills that can make them achievers in the journey of life, turning them into global citizens of 22nd century.

Vision and dreams

are the children of our soul; the blueprints

of our **ultimate achievements.**





Bal Bharati
PUBLIC SCHOOL
LUDHIANA

A **Clear Vision** Backed with definite plans
has tremendous **power and energy**.





Bal Bharati
PUBLIC SCHOOL
LUDHIANA

Vision is **the art** of seeing
what is **invisible** to others





Bal Bharati
PUBLIC SCHOOL
LUDHIANA

Each child is **UNIQUE**
therefore their
EDUCATION should be also.





Bal Bharati
PUBLIC SCHOOL
LUDHIANA

TODAY
*is the day to
learn something*
NEW





Bal Bharati
PUBLIC SCHOOL
LUDHIANA



Perfection
is like chasing
the horizon.



Bal Bharati
PUBLIC SCHOOL
LUDHIANA

Committed to be.. FIT

Body strong....
Mind sharp....
Soul nourished....
Spirit positive.....



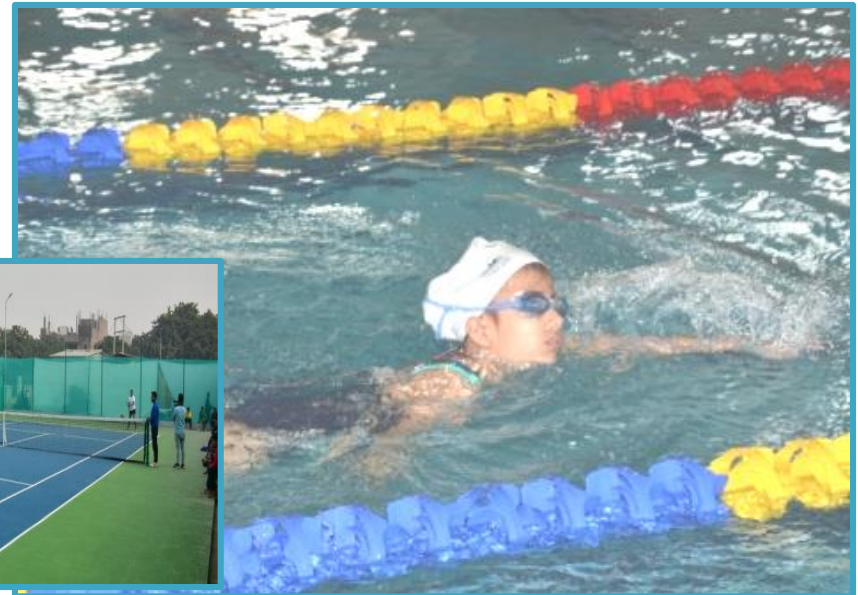


Bal Bharati
PUBLIC SCHOOL
LUDHIANA

The qualities of leadership, teamwork and sporting spirit are learnt on the sports field. Sports and games are compulsory and an integral part of a child's development. Programmes include competitive sports, outdoor adventure sports, regular fitness and physical recreation activities.

The school has excellent outdoor sports facilities including a football court, cricket, swimming, tennis, basketball, volleyball, track and field sports etc. In addition to Physical Education teachers, the school also provides professional coaches.

The sports teachers spot the talent and encourage students to take up the sport that most suits their interests and skills.





Bal Bharati
PUBLIC SCHOOL
LUDHIANA

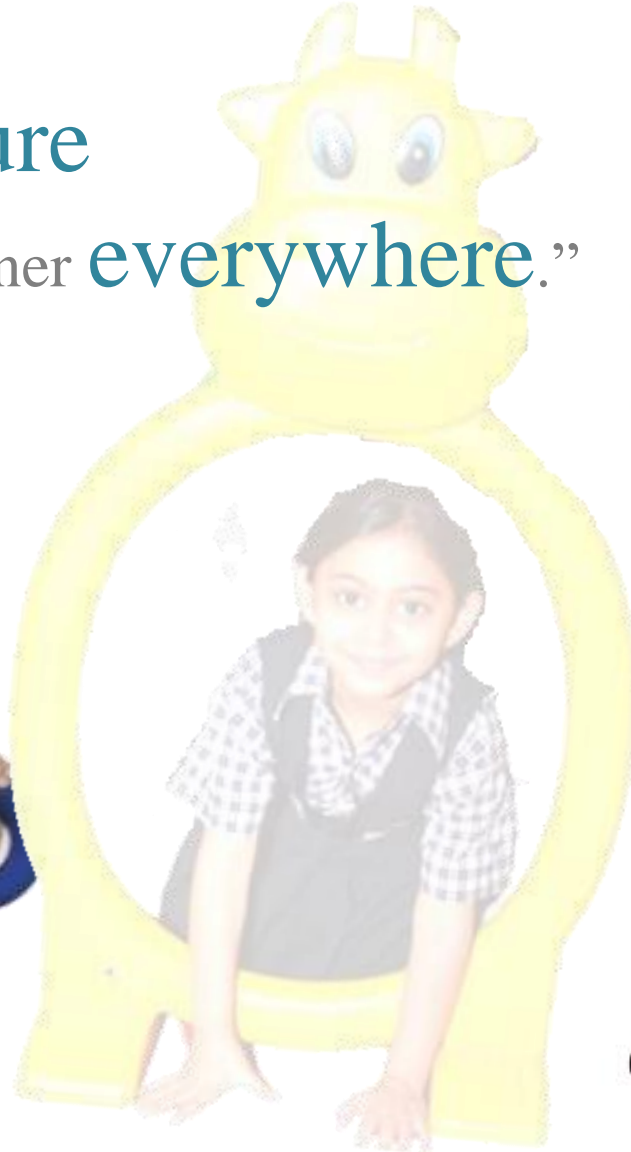
Fitness is the Vital
Principle of **bliss...**





Bal Bharati
PUBLIC SCHOOL
LUDHIANA

“Learning is a **treasure**
that will follow its owner **everywhere.**”





Bal Bharati
PUBLIC SCHOOL
LUDHIANA



Activities that
inspire creativity..

Learning @BBPS



Bal Bharati
PUBLIC SCHOOL
LUDHIANA



Your IMAGINATION is your preview
to life's, coming **ATTRACTIONS**



Bal Bharati
PUBLIC SCHOOL
LUDHIANA



The **CAPACITY** to learn
is a gift; the **ABILITY** to
learn is a skill; the
WILLINGNESS to learn
is a choice.



“The only person who is educated is the one who has learned how to learn and change.”
— Carl Rogers



Bal Bharati
PUBLIC SCHOOL
LUDHIANA



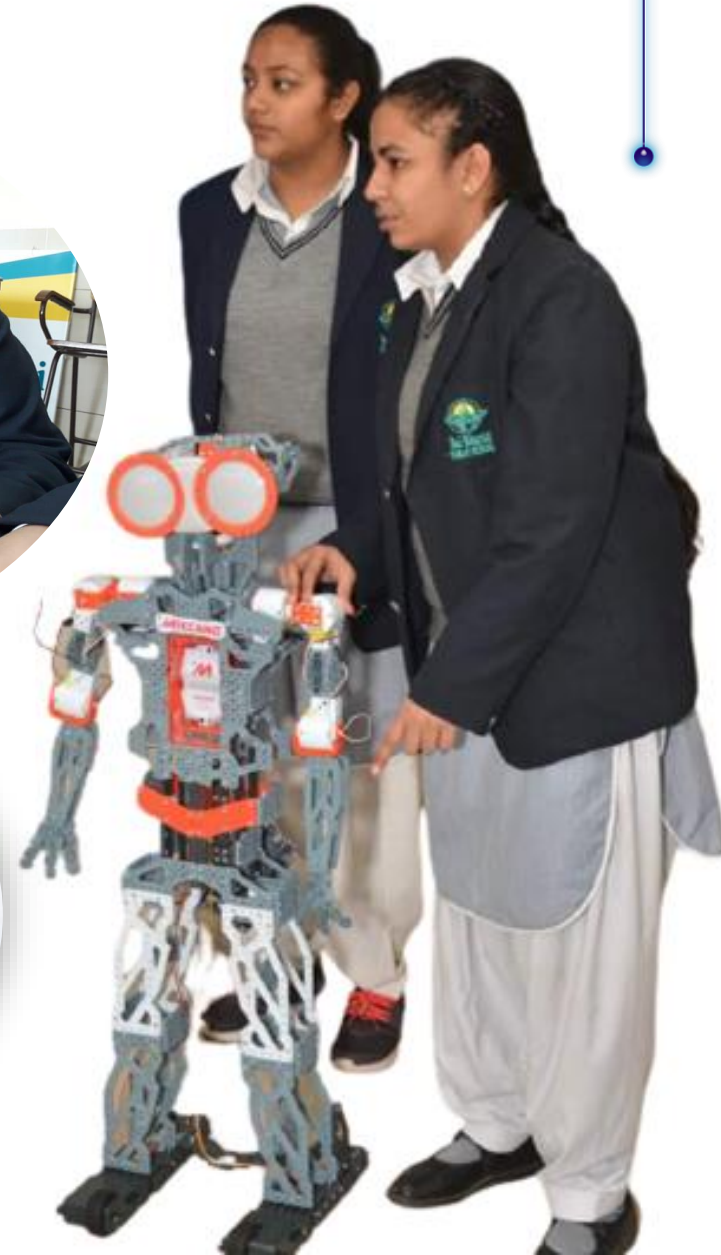
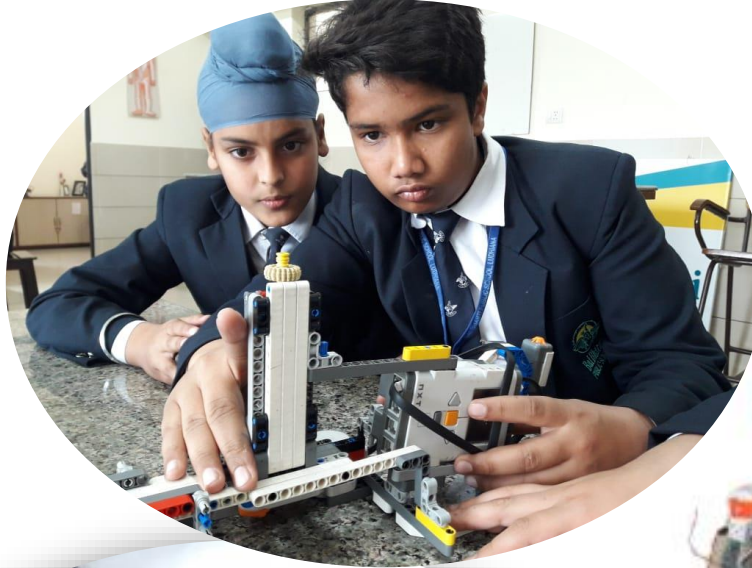
“Adopt the pace of nature, her secret is patience.”

- Ralph Waldo Emerson



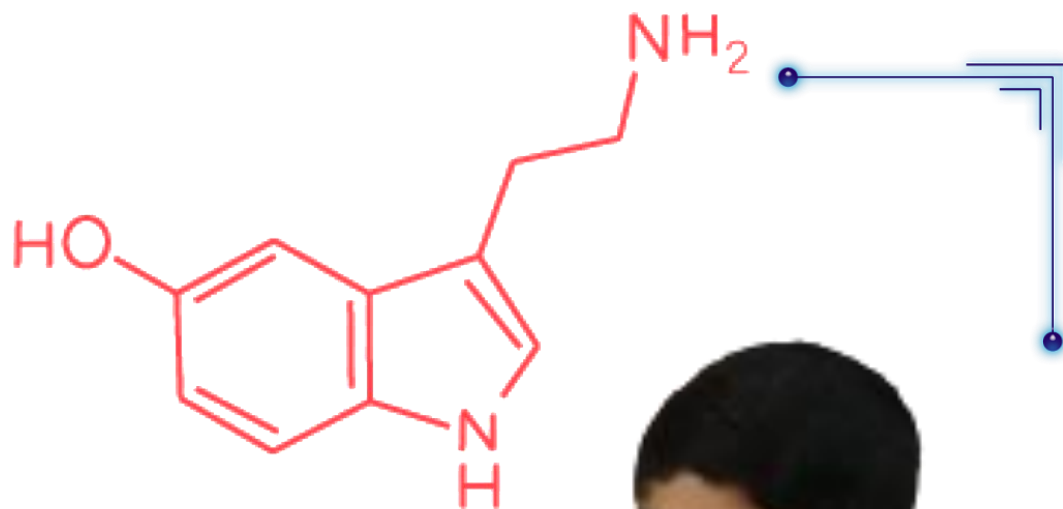
Bal Bharati
PUBLIC SCHOOL
LUDHIANA

Realizing the goal of PERFECTION





Bal Bharati
PUBLIC SCHOOL
LUDHIANA



Keep on
EXPLORING
EVOLVING
EXPERIMENTING





Bal Bharati
PUBLIC SCHOOL
LUDHIANA

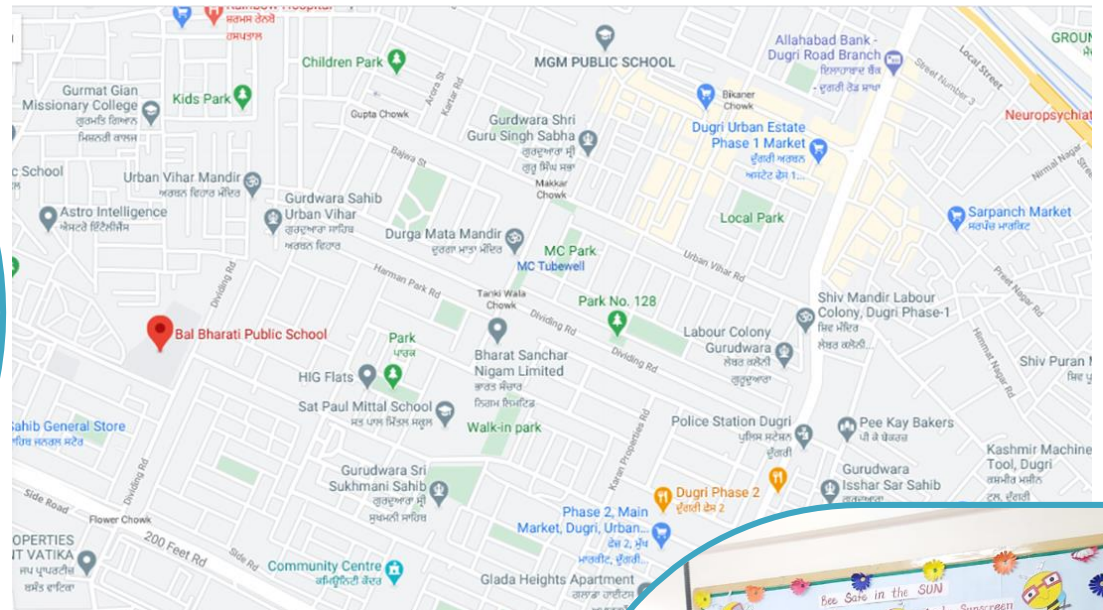


The greatest device for more **creativity and innovation**
.....is a **curious mind....**



Bal Bharati
PUBLIC SCHOOL
LUDHIANA

Our School has a fleet of buses. Safety on the road is given paramount importance. The students embark and disembark within the school campus under the vigilance of transport managers and teaching staff. All the buses are equipped with a medical kit for emergency. There is easily accessible GPS Tracking available for all the buses. In case of a delay due to unforeseen circumstances, parents are immediately informed through SMS.



The school maintains a well-equipped infirmary under the care of a qualified doctor and a trained nurse. Regular health records of height, weight and dental check up of each child are maintained.



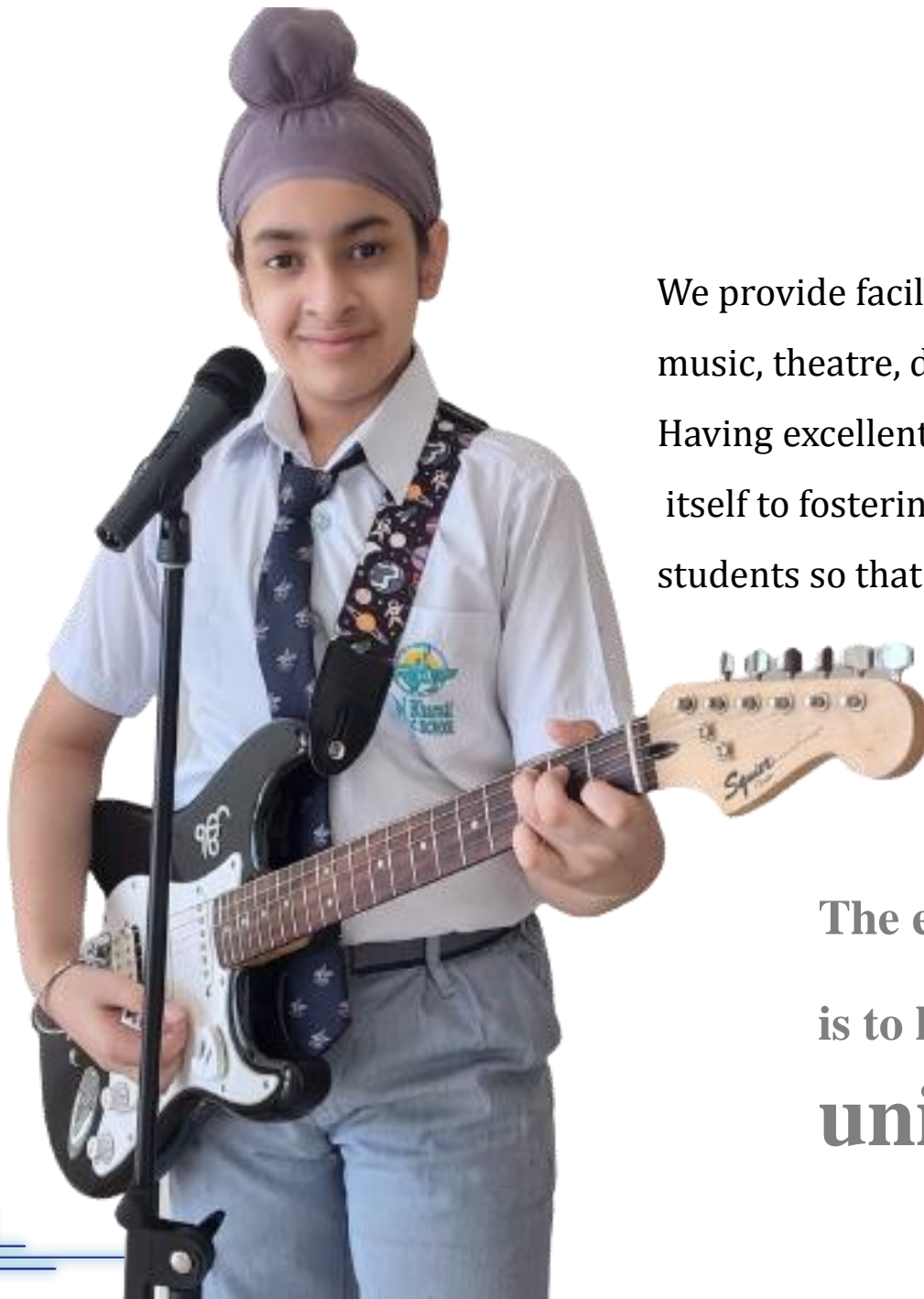


Bal Bharati
PUBLIC SCHOOL

LUDHIANA

We provide facilities to students for self expression via music, theatre, dance, and performing arts.

Having excellent facilities, the school commits itself to fostering creativity and talent among the students so that they may live their dreams.



The essence of **education**
is to help you **discover** your
uniqueness.



Bal Bharati
PUBLIC SCHOOL



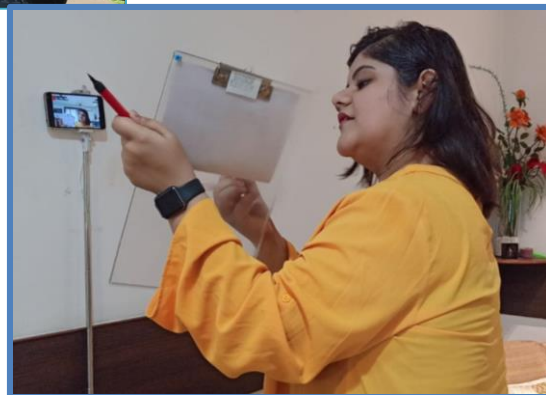
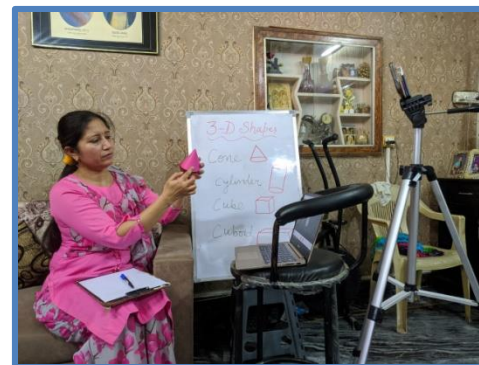
Roots of Action....



Bal Bharati
PUBLIC SCHOOL
LUDHIANA

Uninterrupted Learning during this exceptional times

Mimicking a real classroom, online classes are being provided to the learners for an enhanced learning experience. These real time interactions have replicated the classroom environment to a great extent. Teachers are conducting online quizzes, riddles and critical thinking activities to ensure that the goals of education are being met.





Bal Bharati
PUBLIC SCHOOL
LUDHIANA

A First Step taken in right direction
leads to accomplishment.....





Bal Bharati
PUBLIC SCHOOL
LUDHIANA

Opening eyes to see
new possibilities





Bal Bharati
PUBLIC SCHOOL
LUDHIANA

Clasping Cultural Heritage

Bal Bharatians demonstrating countries legacy.....
our Colourful Culture.....are blend of experience,
skills, character & passion.



Bal Bharati
PUBLIC SCHOOL
LUDHIANA

PERFECTION is not attainable, but if we chase
perfection, we can catch **EXCELLENCE**





Bal Bharati
PUBLIC SCHOOL
LUDHIANA

PERFECTION is not attainable, but if we chase
perfection, we can catch **EXCELLENCE**





Bal Bharati
PUBLIC SCHOOL
LUDHIANA

Heritage Club

Integrity Club

Astronomy Club

Philately Club

Entrepreneur Club

Literary & Reading Club

Disaster Management Club

Sports, Health & Wellness Club

Eco Friendly Science Club

The Club guides the students in an ever-increasing competitive world by providing them with the opportunity to further develop the skills they have attained in classroom.



Bal Bharati
PUBLIC SCHOOL
LUDHIANA



Being **responsible**
in everything you do

Admission

1. Admission is subjected to medical fitness and verification of the date of birth.
2. Preference will be given to the students residing near the school.
3. Preference will be given to those whose brother/sister/ parents have been the students of Bal Bharati Public Schools.

Age Eligibility for Admission

As on April 01, 2023 the child should be

- 2.5 – 3.5 years for Pre- Nursery
- 3.5 – 4.5 years for Mont- I
- 4.5 – 5.5 years for Mont-II
- 5.5 – 6.5 years for class 1st and so on.

Documents Required with the Admission Form

- For Pre- Nursery and Montessori – I
 - (a) Municipal Birth Certificate (Attested copy).
 - (b) Any valid proof of place of residence (Attested copy).
 - (c) One passport size coloured photograph.
 - (d) Copy of Adhar Card of child (Attested copy).
 - (e) Proof of Parent's Qualification (Attested copy).
- For Montessori – II onwards
 - (a) Transfer Certificate from the previous school attended (original).
 - (b) Municipal Birth Certificate (Attested copy).
 - (c) Ration Card or any other valid proof of place of residence (Attested copy).
 - (d) One passport size coloured photograph.
 - (e) Copy of Adhar Card of child (Attested copy).
 - (f) Proof of Parent's Qualification (Attested copy).

TRANSPORT FEE

The school runs buses to all destinations. Transport fee has been worked out depending on the distance to be covered. Details of applicable transport fee can be obtained from the school office. Transportation facility once opted, can only be dropped w.e.f. succeeding quarter, after a written intimation to Bus In-charge.

SCHOOL FEE & TRANSPORT CHARGES

To be notified later.

PAYMENT MODE

- School dues are to be paid only through online mode. For details, refer to School website,

<http://bbpsldh.balbharati.org>

<http://bbpsldhu1.balbharati.org/>

- Cash /Cheque/Demand Draft and NEFT are not acceptable.
- Office timings: Monday to Saturday 9.00 am to 1.00 pm. (2nd and 4th Saturday closed).

Due Dates :

Fee is to be paid in quarterly instalments on following due dates.

Quarter	Due date
1 st (April – June)	10 th April to 20 th April
2 nd (July –Sep)	10 th July to 20 th July
3 rd (Oct–Dec)	10 th Oct to 20 th Oct
4 th (Jan– Mar)	10 th Jan to 20 th Jan

FINE ON DELAYED PAYMENT OF FEE:

- Rs 200/- for fee paid after due date till 10th of the 2nd month of the quarter. (Between 21st April to 10th May, in case of 1st quarter)
- Rs 500/- for fee paid between 11th of the 2nd month of the quarter to 10th of the 3rd month of the quarter. (Between 11th May to 10th June, in case of 1st quarter)
- Rs 1000/- for fee paid between 11th of the 3rd month of the quarter to 20th of the 1st month of next quarter. (Between 11th June to 20th July, in case of 1st quarter).
- For Quarter 4, last date to clear all the school dues is 5th March 2021.
- In case dues are not paid as per the above time schedule, student's name will be struck off from school rolls and will be reinstated only on payment of dues with applicable fine and restoration charges.
- In case of activity charges, cheques dishonour will be subject to bank charges.
- *Fine policy 2023-24 is subject to change.*

IN CASE OF NEW ADMISSION:

- Admission fee once paid is non-refundable.
- Non submission of fee within 15 days of selection will lead to passing on the seat to next candidate in the waiting list.
- Dues at the time of admission are payable through Bank Draft drawn in favour of "Bal Bharati Public School" payable, at Ludhiana.

SCHOOL UNIFORM

PRE-NURSERY, MONTESSORI- I , II



SUMMER UNIFORM (From 1st April onwards)

- Boys :**
1. Shirt half sleeves (blue check with logo)
 2. Shorts navy blue with buttons on the fly
 3. Socks grey (with two navy blue bands)
 4. Belt- blue & grey with brass buckle
 5. Neck tie –blue (with printed school logo)
 6. Shoes- black (Oxford style)
 7. Patka colour navy Blue.

- Girls :**
1. Shirt, socks, belt & tie- same as for boys
 2. Tunic colour navy blue & head band colour black
 3. Shoes – black (with buckle)

WINTER UNIFORM (From 1st Nov. onwards)

- Boys :**
1. Shirt full sleeves (blue check with logo)
 2. Blue trousers
 3. Pullover grey with logo
 4. Blue jacket(with red inside hood)/blazer with logo on the pocket
 5. Socks with two navy blue bands
 6. Belt- blue & grey with brass buckle
 7. Neck tie –blue (with printed school logo)
 8. Shoes- black (Oxford style)
 9. Patka colour navy Blue

- Girls :**
1. Shirt, trousers, pullover, jacket(with red inside hood)/blazer with logo on the pocket
 2. Shoes, ribbon and head band of black colour
 3. Socks, school belt & tie – same as for boys

SCHOOL UNIFORM

CLASS VI –XII



SUMMER UNIFORM (From 1st April onwards)

- BOYS :**
1. White shirt (half sleeves with collar & logo on the pocket).
 2. Trousers of prescribed grey colour & design.
 3. Grey socks with blue stripes.
 4. Black shoes on all weekdays.
 5. School belt
 6. School tie.
 7. Patkas of white colour.

GIRLS : (VI-VIII)

1. White shirt (half sleeves with tie collar & logo on the pocket).
2. Divided skirt (knee length) of prescribed grey colour & design.
3. Shoes & ribbons of black colour.
4. Socks, school belt & tie – same as for boys.

(IX-XII)

1. Salwar Kameez- Prescribed colour and style as displayed on website.
(This uniform is optional for girls from class VI-VIII.)
2. Shoes and ribbons of black colour.
3. Grey socks with blue stripes.

WINTER UNIFORM (From 1st Nov. onwards)

- BOYS :**
1. White shirt (full sleeves with collar & logo on the pocket).
 2. Trousers of prescribed grey colour & design.
(same as summer uniform).
 3. Blue blazer, grey V- neck pullover with logo and blue stripes.
 4. Black shoes on all weekdays.
 5. School belt.
 6. School tie.
 7. Woollen long socks(specified colour).
 8. Patkas of grey colour.

GIRLS : (VI-VIII)

1. White shirt (full sleeves with collar & logo on the pocket).
2. Divided skirt knee length (same as summer uniform).
3. Shoes & ribbons of black colour.
4. Pullover,blazer,school belt,tie & socks – same as for boys.
(IX-XII)
1. Salwar Kameez- Prescribed colour & style as displayed on website.
(This uniform is optional for girls from class VI-VIII)
2. Shoes and ribbons of black colour.
3. Pullover,blazer & socks – same as for boys.

CLASS I to V

SUMMER UNIFORM

(From 1st April onwards)

- Boys :**
1. White shirt (half sleeves with logo on the pocket)
 2. Shorts of prescribed grey colour and design
 3. Grey socks with blue stripes
 4. Black shoes on all weekdays
 5. School belt
 6. School tie
 7. Patka of white colour
- Girls :**
1. White shirt (half sleeves with logo on the pocket)
 2. Divided skirt (knee length) of prescribed grey colour and design (same as summer uniform).
 3. Shoes, ribbon and head band of black colour
 4. Socks, school belt & tie – same as for boys

WINTER UNIFORM

(From 1ST Nov. onwards)

- Boys :**
1. White shirt (full sleeves with logo on the pocket)
 2. Trousers of prescribed grey colour and design (same as summer uniform)
 3. Grey V-neck pullover with logo and blue stripes
 4. Blue Jacket (with red hood inside)/ blazer with logo on the pocket
 5. School tie
 6. School belt
 7. Woollen long socks (specified colour)
 8. Black shoes on all weekdays.
 9. Patka of white colour.
- Girls :**
1. White shirt (full sleeves with logo on the pocket).
 2. Divided skirt knee length (same as summer uniform).
 3. Pullover, Jacket / Blazer, School belt, tie & socks same as for the boys.
 4. Shoes, ribbon and head band of black colour.



Bal Bharati
PUBLIC SCHOOL
LUDHIANA

IMAGINE
CREATE
THINK beyond the limits.
THEN ACT.





Bal Bharati
PUBLIC SCHOOL
LUDHIANA

Excellence
beyond limits.

